

# Hino City Flood Hazard Map

This map was prepared based on a map of inundation risk areas in the Tama River water system (Tama River and Asa River) that was provided by the Ministry of Land, Infrastructure, Transport and Tourism (MLIT) on May 30th, 2016. The map indicates the extent of inundation risk areas, water depth, safe directions for evacuation and evacuation shelters when flooding of these rivers occurs.

Inundation risk areas have been greatly extended in this version of the Flood Hazard Map. In Hino city, the areas have extended 168 hectares more which is equivalent to one fourth of the city area. Please make sure to note that the expected flood height has changed in some areas.

**Assumption used when establishing the anticipated flood areas**  
The condition of the simulation is when torrential rain of 588 mm over two consecutive days collects in the basin of the Tama River water system. (The highest predicted rainfall)

**When using this map, please remember**  
Actual areas of flooding and flood depths could vary from those shown here.

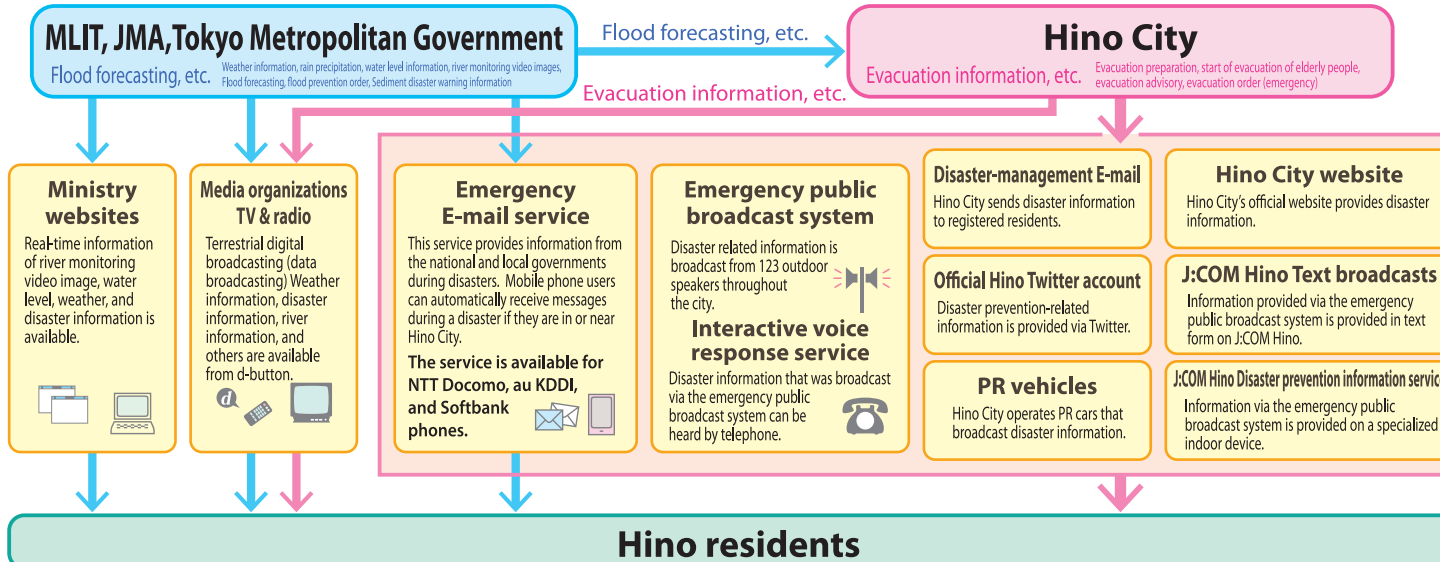
## Evacuation information and actions to be taken

Hino city monitors information of water levels of Tama River and Asa River and rain precipitation provided by MLIT or Japan Meteorological Agency (JMA) as well as gathering on-site information through manned monitoring, and issues evacuation information below when a risk of flood disaster arises. Evacuation information may be issued in no particular order. Even if no evacuation information is issued, check the latest weather information and evacuate promptly when a dangerous situation seems likely to occur.

Evacuation information presents areas where evacuation is necessary according to the situation, and available evacuation shelters.

Category	Circumstances at time of issuance	Action to be taken
<b>Evacuation preparation</b> <b>Elderly people</b> <b>Evacuation start</b>	<ul style="list-style-type: none"> <li>The possibility of personal injury or death has risen, and circumstances have reached a point where those who will need a particularly long time to evacuate (such as people who require special care) must begin evacuating.</li> </ul>	<ul style="list-style-type: none"> <li>Especially those who need a long time to evacuate should begin evacuating early. Other people should begin preparation of evacuation such as contacting family members and arranging emergency items to take with you.</li> </ul>
<b>Evacuation advisory</b>	<ul style="list-style-type: none"> <li>The possibility of personal injury or death has become distinct, and circumstances have reached a point where people who can evacuate normally must begin to do so.</li> </ul>	<ul style="list-style-type: none"> <li>Begin moving to an evacuation area if you are capable of evacuating normally.</li> </ul>
<b>Evacuation order (Emergency)</b>	<ul style="list-style-type: none"> <li>It is judged from local characteristics (such as location near a levee, etc.) that a serious threat to human lives exists.</li> <li>It is judged from the appearance of phenomena that portend a catastrophic or imminent danger that a serious threat to human lives exists.</li> <li>Injuries or deaths have occurred.</li> </ul>	<ul style="list-style-type: none"> <li>Evacuate immediately.</li> <li>&lt;In case you could not evacuate&gt;</li> <li>Those who live in an area prone to landslides should leave rooms that face the slope or move to the second floor.</li> <li>If flooding is expected, move to a safe area, such as a high place in your building.</li> </ul>

## Communication methods and channels



## Hino residents

The "Flood Hazard Map" is for when there is danger of flood disaster in Tama River or Asa River caused by typhoon or heavy rainfall. See "Disaster Prevention Map" on the other side in case of an earthquake or large scale fire because evacuation shelter locations are different.

Check once again whether your house is located in an inundation risk area or not, and the expected water height in your area. It is also important to know your evacuation shelter and evacuation route.

## These emergency evacuation areas will not open when there is a danger of flood in the area.

List of designated emergency evacuation areas during times of flooding			
Facility name	Address	Facility name	Address
1 Hino Dai-ichi Elem. School (school ground)	2-141 Hinohonmachi	36 Tokyo Metropolitan High School (portion of school ground)	1-190-1 Ichida
2 Toyoda Elem. School (school ground)	2-141 Higashitoyoda	37 Meisei University (portion of school ground)	2-1-1 Hodokubo
3 Hino Dai-san Elem. School (school ground)	2-1-1 Hinodai	38 Jissen Women's Educational Institute (portion of school ground)	4-1-1 Osakae
4 Hino Dai-yon Elem. School (school ground)	430 Kishida	39 Tokyo Metropolitan University (portion of school ground)	6-4 Asahiyaoka
5 Hino Dai-go Elem. School (school ground)	6-21-1 Tamadaira	40 Hiryuamada High School (School Support Center (sports ground))	2-1 Hirayama
6 Hino Dai-roku Elem. School (school ground)	2-21 Tamadaira	41 Hino Dai-nani Elem. School (school ground)	999 Mogusa
7 Yamaoka Elem. School (school ground)	4022 Takahata	42 Kyuliu Club (sports ground)	550 Hodokubo
8 Hirayama Elem. School (school ground)	4-6 Hirayama	43 Tokyo Sports Ground	3-15 Sakae
9 Hino Dai-hachi Elem. School (school ground)	200 Misawa	44 Shinmei no Mori Sports Park	7-12-1 Nishihirayama
10 Takaki Elem. School (school ground)	2-3-1 Nishihirayama	45 Komagata Park	Kawabehorinouchi
11 Hino Dai-nana Elem. School (school ground)	3-2 Shinmei	46 Hino Central Park	2-13-2 Shinmei
12 Minamidaira Elem. School (school ground)	4-18-1 Minamidaira	47 Asakawa Sports Park	5-3-7 Marugogji
13 Asahioka Elem. School (school ground)	5-21-1 Asahioka	48 Mt. Naganagi Central Park	4-20-12 Mt. Naganagi
14 Tokoji Elem. School (school ground)	3-24-1 Shinmachi	49 Mogusado Nature Park	914-85 Mogusa
15 Nakada Elem. School (school ground)	8-74 Nishihirayama	50 Kashimada Community Space	1-10-43 Minamidaira
16 Yamaoka Elem. School (school ground)	1-14-2 Hodokubo	41 Tamadaira Dai-ichi Park	4-2 Tamadaira
17 Nanamidori Elem. School (school ground)	896-1 Mogusa	42 Tamadaira Dai-ni Park	4-10 Tamadaira
18 Hino Dai-ichi Jr. High School (school ground)	3-2-3 Nishihirayama	43 Asahioka-Higashi Park	1-18-1 Asahioka
19 Hino Dai-ji Jr. High School (school ground)	4-5-2 Tamadaira	44 Hino Motors general sports ground	5-18 Shinmachi
20 Nanao Jr. High School (school ground)	6-3-1 Minamidaira	45 Takahata-Fudosen (portion of the temple grounds)	733 Takahata
21 Hino Dai-san Jr. High School (school ground)	650 Hodokubo	46 Sugino Gakuen sports ground	1006 Mogusa
22 Hino Dai-yon Jr. High School (school ground)	2-42 Asahioka	47 Okinaga Gakuen sports ground	Outside 804-17 Mogusa
23 Misawa Jr. High School (school ground)	1-17-4 Misawa	48 Teikyo University parking facility	Outside 804-17 Mogusa
24 Osakae Jr. High School (school ground)	4-17-1 Osakae	49 Wild Bird Society of Japan (portion of the grounds of WING)	2-35-2 Minamidaira
25 Hirayama Jr. High School (school ground)	4-21-3 Hirayama	50 Konica-Minolta Hino sports ground	1 Sakuramachi

List of designated evacuation shelters during times of flooding			
Facility name	Address	Facility name	Address
1 Hino Dai-ichi Elem. School	2-141 Hinohonmachi	14 Tokoji Elem. School	3-24-1 Shinmachi
2 Toyoda Elem. School	2-141 Higashitoyoda	15 Nakada Elem. School	8-74 Nishihirayama
3 Hino Dai-san Elem. School	2-1-1 Hinodai	16 Yamaoka Elem. School	1-14-2 Hodokubo
4 Hino Dai-yon Elem. School	430 Kishida	17 Nanaomidori Elem. School	896-1 Mogusa
5 Hino Dai-go Elem. School	6-21-1 Tamadaira	18 Hino Dai-ichi Jr. High School	3-2-3 Nishihirayama
6 Hino Dai-roku Elem. School	2-21 Tamadaira	19 Hino Dai-ji Jr. High School	4-5-2 Tamadaira
7 Yamaoka Elem. School	4022 Takahata	20 Nanao Jr. High School	6-3-1 Minamidaira
8 Hirayama Elem. School	4-6 Hirayama	21 Hino Dai-san Jr. High School	650 Hodokubo
9 Hino Dai-hachi Elem. School	200 Misawa	22 Hino Dai-yon Jr. High School	2-42 Asahioka
10 Takaki Elem. School	2-3-1 Nishihirayama	23 Misawa Jr. High School	1-17-4 Misawa
11 Hino Dai-nana Elem. School	3-2 Shinmei	24 Osakae Jr. High School	4-17-1 Osakae
12 Minamidaira Elem. School	4-18-1 Minamidaira	25 Hirayama Jr. High School	4-21-3 Hirayama
13 Asahioka Elem. School	5-21-1 Asahioka	26 Shinmei no Mori Fureai Hall	6-13-3 Nishihirayama

## Preparing your home for disasters

- Inspect and maintain your home and property.
  - Inspect and clean up street gutters and drains.
  - Check if slide shutters, drain spouts, antennas, and garage roofs are fixed and secured.
- Prepare sandbags or other barriers
  - Prepare flood defense products such as sandbags, water-filled bags or flood gates.

## Things to do in case of disaster strikes

- Pay attention to evacuation announcements and gather accurate information.
  - In case a dangerous situation is likely, the city office or fire stations may issue a voluntary evacuation advisory. Evacuate immediately when the advisory is issued. It is dangerous to evacuate from home after a flood inundation occurs.
- Wear comfortable clothing and evacuate in groups of two or more people.
  - Independent action is risky because of the possibility of an accident occurring. Wear clothes that are easy to move around in and try to evacuate in groups of two or more people.
- Refrain from evacuating by car.
  - Evacuation by car may not only cause traffic jams or block emergency vehicles but also you may not be able to evacuate due to traffic jams. In addition, when a car is caught in a flood, it gets stuck and you cannot open doors due to the water pressure. Please refrain from evacuating by car.
- Cautions when you have to walk in flood waters.
  - Use a cane or stick to check water depth in front of you in a flooded area.
  - Wear shoes easy to walk in but hard to come off because floodwater moves very fast.

## Availability of the Flood Hazard Map in other languages.

The map will be available in English, Chinese, French, and Spanish. Printed editions will be posted on the website of the city office. Please contact the Division of Disaster prevention and Safety if you need the audio or Braille edition.

Water level information or weather information are available by telephone or on the Internet.

**Weather forecast telephone service** Call 1777  
The automated answering system provides rainfall, water level and flooding information 24/7. Information from Asahioka meteorological station in Hachioji city is also available.

**Online Real-time information**  
Water levels and rainfall information of Tama River and Asa River, and live streaming live monitoring video image are available.  
<http://www.ktr.mlit.go.jp/keihin/>

**Tokyo Amesh**  
<http://tokyo-ame.jwa.or.jp/>

**Japan Meteorological Agency (JMA)**  
<http://www.jma.go.jp/>

**Keihin River Office, Kanto Regional Development Bureau, MLIT Telephone service / website**  
Call 045-503-1648  
Information from Asahioka meteorological station in Hachioji city is also available.

**JCOM Hino Text broadcasts**  
Information provided by the emergency public broadcast system is provided in text from 12:00 PM.

**Interactive voice response service**  
Disaster information that is available on the emergency public broadcast system is provided on the hotkey telephone.

**PRR vehicles**  
Hino City has PRR vehicles that broadcast disaster information.

**Disaster-management E-mail**  
New City sends disaster information through e-mails.

**Official Hino Twitter account**  
Disaster prevention information is provided on Twitter.

**Hino City website**  
New City website provides disaster information.

**Hino City Text broadcasts**  
Information provided by the emergency public broadcast system is provided in text from 12:00 PM.

**Interactive voice response service**  
Disaster information that is available on the emergency public broadcast system is provided on the hotkey telephone.

**PRR vehicles**  
Hino City has PRR vehicles that broadcast disaster information.

**Disaster-management E-mail**  
New City sends disaster information through e-mails.

**Official Hino Twitter account**  
Disaster prevention information is provided on Twitter.

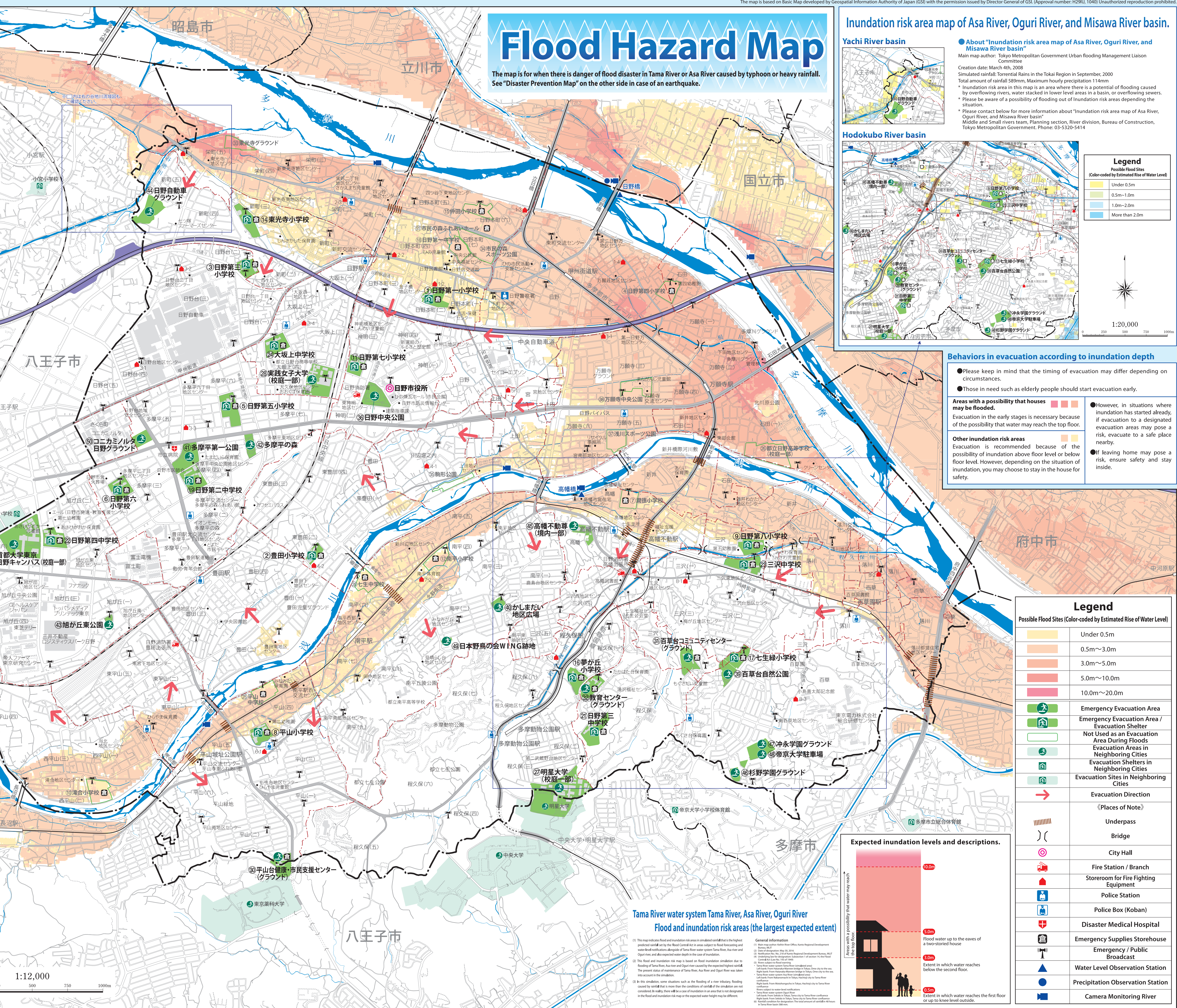
**Hino City website**  
New City website provides disaster information.

## Emergency warnings, warnings, and advisories (heavy rains and floods)

**<<Emergency warning for rains>>** Issued when the Japan Meteorological Agency website Heavy rainfall with a level of intensity observed only once every few decades is predicted in association with a typhoon or similar storm, or heavy rainfall is predicted in association with the spring expected to have a level of intensity observed only once every few decades, or an extratropical cyclone with comparable intensity. If an emergency warning is issued, your neighborhood is facing a hazardous situation that generally occurs once every few decades. Pay close attention to conditions in your area as well as to evacuation instructions and advisories from your municipality. Evacuate immediately once an evacuation order has been issued.

**<<Heavy rain/flood advisories and warnings>>**  
Hino City uses the following criteria for issuing heavy rain/flood advisories and warnings.

Category	Criteria for issuance
<b>Advisory</b> Heavy rain Heavy rain advisory	Issued when the possibility of a heavy rain-caused event is predicted. Possible events include floods and landslides. An advisory may stay in effect even after the rain ends if the possibility of a landslide or other event remains.
<b>Warning</b> Flood Flood warning	Issued when rivers rise due to heavy rain, prolonged rain, snowmelt, etc., and the possibility of an ensuing event exists. Possible events include river flooding and levee damage or failure.
<b>Warning</b> Flood Flood warning	Issued when the possibility of a heavy rain-caused catastrophe is predicted. Possible catastrophes include major floods and major landslides. An advisory may stay in effect even after the rain ends if the possibility of a landslide or other event remains.
<b>Warning</b> Flood Flood warning	Issued when rivers rise due to heavy rain, prolonged rain, snowmelt, etc., and the possibility of an ensuing catastrophe exists. Possible catastrophes include river flooding and levee damage or failure.



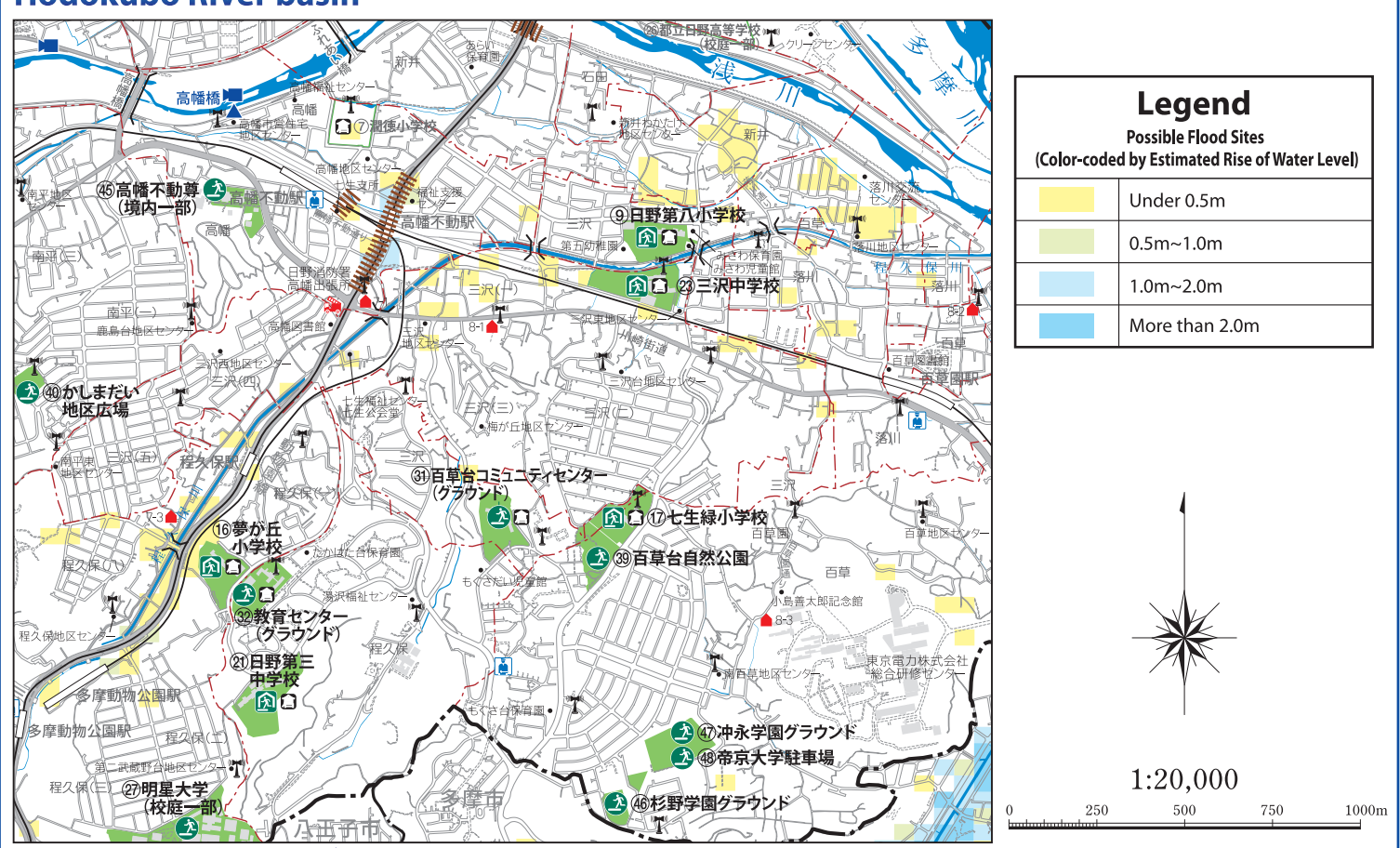
# Flood Hazard Map

The map is for when there is danger of flood disaster in Tama River or Asa River caused by typhoon or heavy rainfall. See "Disaster Prevention Map" on the other side in case of an earthquake.

## Inundation risk area map of Asa River, Oguri River, and Misawa River basin.

**Yachi River basin**  
Main map author: Tokyo Metropolitan Government Urban Flooding Management Liaison Committee  
Creation date: March 4th, 2008  
Simulated rainfall: Torrential Rains in the Tokai Region in September, 2000  
Total amount of rainfall 589mm, Maximum hourly precipitation 114mm  
Inundation risk area in this map is an area where there is a potential of flooding caused by overflowing rivers, water stacked in lower level areas in a basin, or overflowing sewers.  
Please be aware of a possibility of flooding out of inundation risk areas depending the situation.  
Please contact below for more information about "Inundation risk area map of Asa River, Oguri River, and Misawa River basin"  
Middle and Small rivers team, Planning section, River division, Bureau of Construction, Tokyo Metropolitan Government. Phone: 03-5320-5414

**Hodokubo River basin**



## Behaviors in evacuation according to inundation depth

- Please keep in mind that the timing of evacuation may differ depending on circumstances.
- Those in need such as elderly people should start evacuation early.
- Areas with a possibility that houses may be flooded.
  - Evacuation in the early stages is necessary because of the possibility that water may reach the top floor.
- Other inundation risk areas.
  - Evacuation is recommended because of the possibility of inundation above floor level or below floor level. However, depending on the situation of inundation, you may choose to stay in the house for safety.
- However, in situations where inundation has started already, if evacuation to a designated evacuation areas may pose a risk, evacuate to a safe place nearby.
- Leaving home may pose a risk, ensure safety and stay inside.

## Legend

- Possible Flood Sites (Color-coded by Estimated Rise of Water Level)
  - Under 0.5m
  - 0.5m~1.0m
  - 1.0m~2.0m
  - More than 2.0m
- Emergency Evacuation Area
- Emergency Evacuation Area / Evacuation Shelter
- Not Used as an Evacuation Area During Floods
- Evacuation Areas in Neighboring Cities
- Evacuation Shelters in Neighboring Cities
- Evacuation Sites in Neighboring Cities
- Evacuation Direction (Places of Note)
- Underpass
- Bridge
- City Hall
- Fire Station / Branch
- Storeroom for Fire Fighting Equipment
- Police Station
- Police Box (Koban)
- Disaster Medical Hospital
- Emergency Supplies Storehouse
- Emergency / Public Broadcast
- Water Level Observation Station
- Precipitation Observation Station
- Camera Monitoring River

## Expected inundation levels and descriptions.

