

Koto City Flood Hazard Map (Sumida River and Koto Inland River Basin)

This map indicates areas that are predicted to flood and the flooding depth in the event of a large amount of rainfall that exceeds the processing capabilities of the existing sewerage facilities as well as major public facilities in the Sumida River and Koto inland river basin.

The flooding depth is based on the areas predicted to flood created by the Tokyo Metropolitan Government in 2004.

- The scale of flooding is presumed to be similar to the torrential rain in the Tokai region (total rainfall of 589 mm and a maximum hourly rainfall of 114 mm) in September 2000.
- The flooding depth is indicated by the depth of the deepest point in a mesh (block) with a 50 m side.

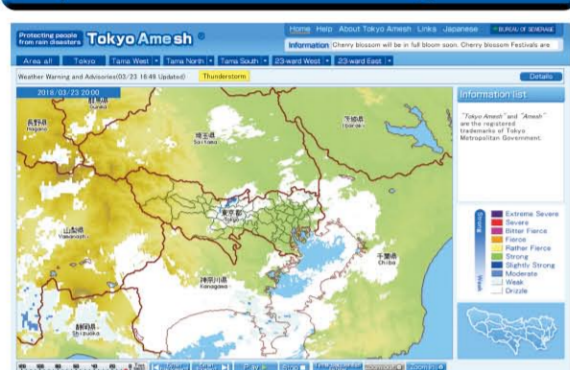
If there is the possibility of a flood, go above ground if you are below ground, and if an evacuation notice is issued by the City, go to the third or higher floor in your house or a sturdy building nearby (public facility or the like).

Note that areas other than those indicated on the map may flood in certain circumstances.

Koto City March 2018

「Evacuate to Tall Buildings in the Neighborhood」

Tokyo Amesh (Bureau of Sewerage Website)



- Address of the Bureau of Sewerage Website <http://www.gesui.metro.tokyo.jp/>
- Address of the Tokyo Amesh Website [English] <http://tokyo-ame.jwa.or.jp/en/index.html>

From a Smartphone

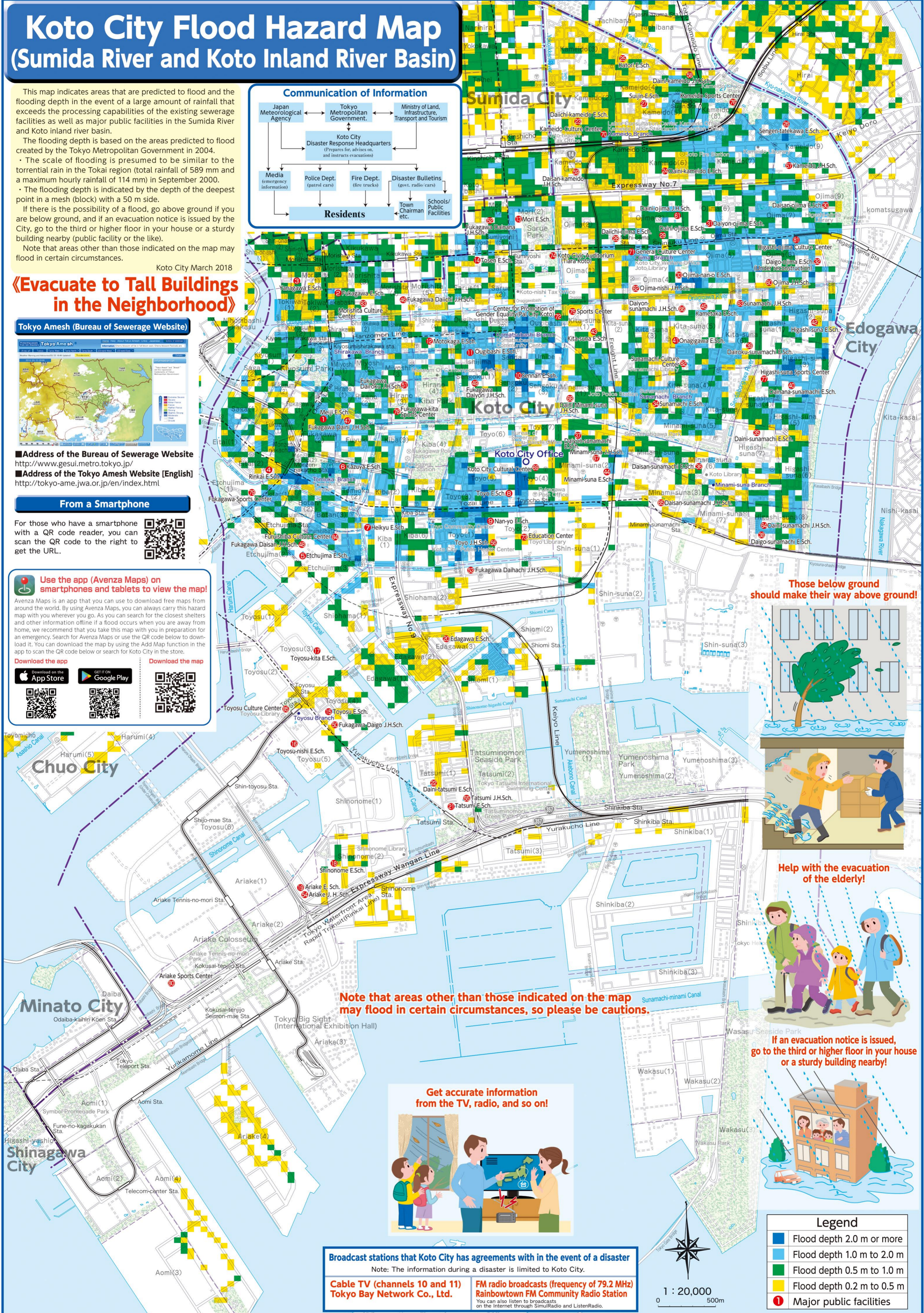
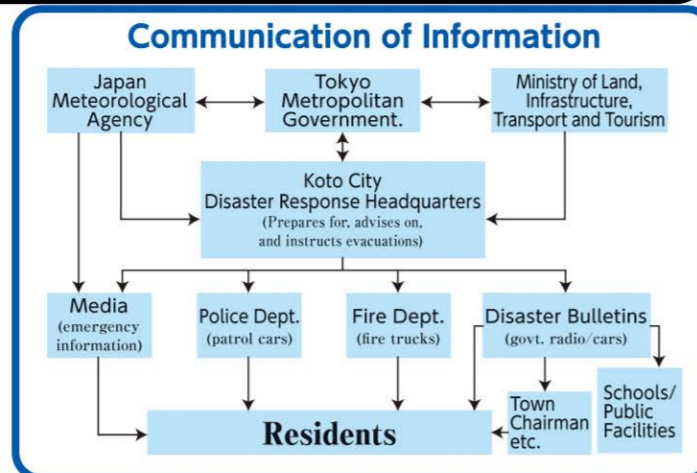
For those who have a smartphone with a QR code reader, you can scan the QR code to the right to get the URL.



Use the app (Avenza Maps) on smartphones and tablets to view the map!

Avenza Maps is an app that you can use to download free maps from around the world. By using Avenza Maps, you can always carry this hazard map with you wherever you go. As you can search for the closest shelters and other information offline if a flood occurs when you are away from home, we recommend that you take this map with you in preparation for an emergency. Search for Avenza Maps or use the QR code below to download it. You can download the map by using the Add Map function in the app to scan the QR code below or search for Koto City in the app.

Download the app Download the map



Those below ground should make their way above ground!



Help with the evacuation of the elderly!



If an evacuation notice is issued, go to the third or higher floor in your house or a sturdy building nearby!



Note that areas other than those indicated on the map may flood in certain circumstances, so please be cautious.

Get accurate information from the TV, radio, and so on!



Broadcast stations that Koto City has agreements with in the event of a disaster

Note: The information during a disaster is limited to Koto City.

- Cable TV (channels 10 and 11)**
Tokyo Bay Network Co., Ltd.
- FM radio broadcasts (frequency of 79.2 MHz)**
Rainbowtown FM Community Radio Station

You can also listen to broadcasts on the Internet through SimulRadio and ListenRadio.

Legend	
	Flood depth 2.0 m or more
	Flood depth 1.0 m to 2.0 m
	Flood depth 0.5 m to 1.0 m
	Flood depth 0.2 m to 0.5 m
	Major public facilities



1 : 20,000
0 500m