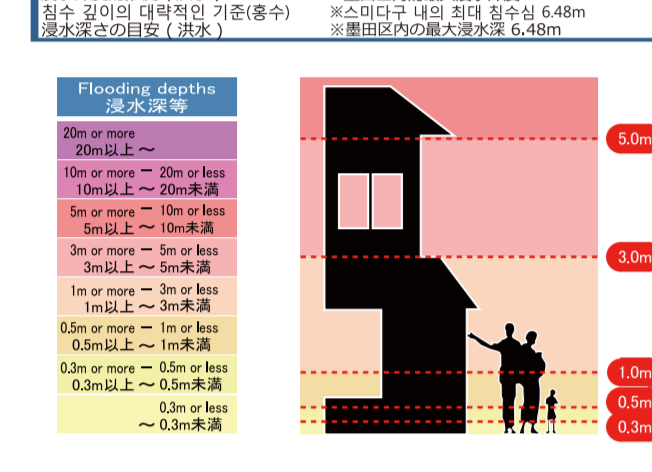
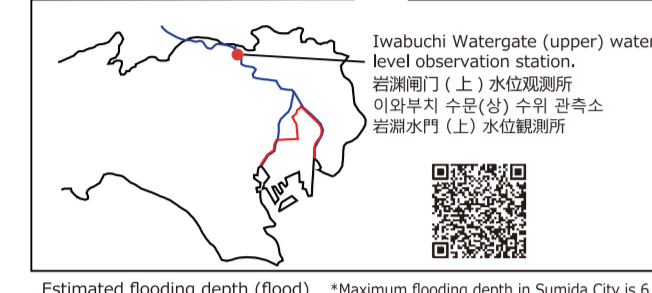
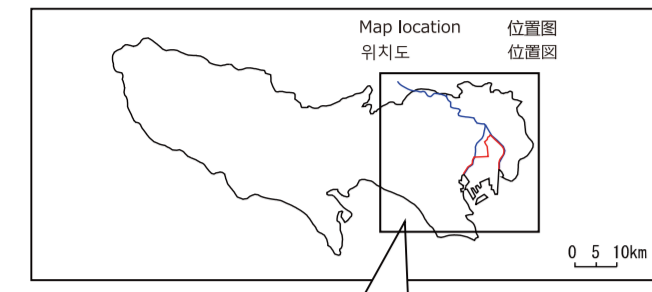


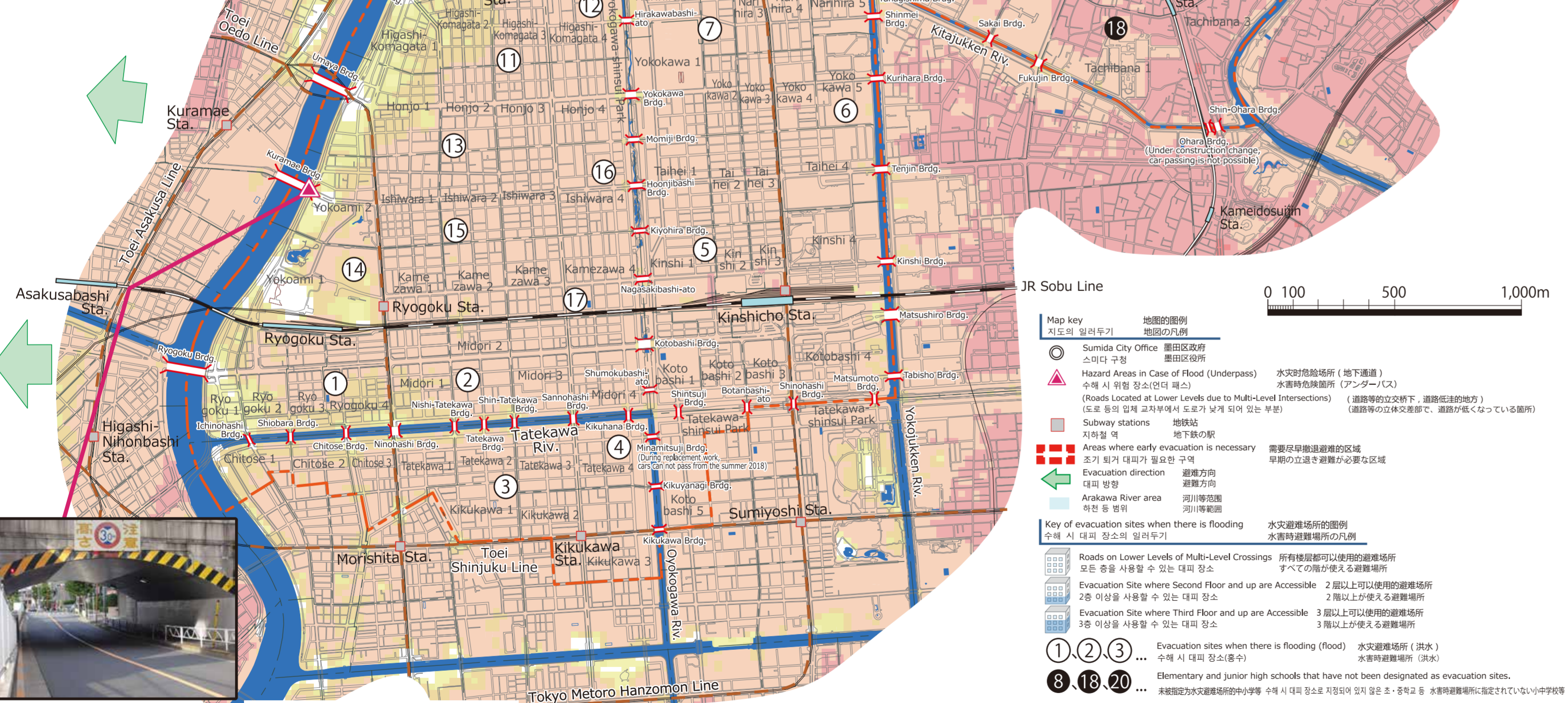
Sumida City Flood Hazard Map 墨田区水災危険地図
스미다구 수해 해지드 맵 墨田区水害ハザードマップ

-Map of the estimated flood areas in case the Arakawa River overflows (maximum estimated scale) - 荒川泛濫時の洪水想定区域(最大想定規模)
 -아라카와가 범람한 경우의 침수 예상 구역(최대 예상 규모) - 荒川이 넘었을 때의 침수 예상 구역(최대 예상 규모)
 -Areas where early evacuation is necessary - 需要尽早撤退避難的区域 - 需要尽早撤退避難的区域
 -조기 퇴거 대피가 필요한 구역 - 早期의 이득키避難이 필요한 구역 - 早期의 이득키避難이 필요한 구역

Name : Arakawa River Estimated Flood Area Map
 Prepared by the Arakawa-Karyu River Office in the Kanto Regional Development Bureau of the Ministry of Land, Infrastructure, Transport and Tourism (MLIT)
 Created on: May 30, 2016
 Assumed rainfall: Total precipitation of 632mm within 72 hours in the Arakawa River basin (Maximum estimated rainfall as prescribed by the Flood Prevention Law)



In principle, evacuate outside of the city to where flooding is not predicted to happen
 原则上、洪水が予測されない地域に避難する
 原则上、洪水が予測されない地域に避難する
 원칙적으로 구외의 침수 예상 구역 밖으로 대피한다
 原則、区外の洪水想定区域外に避難する



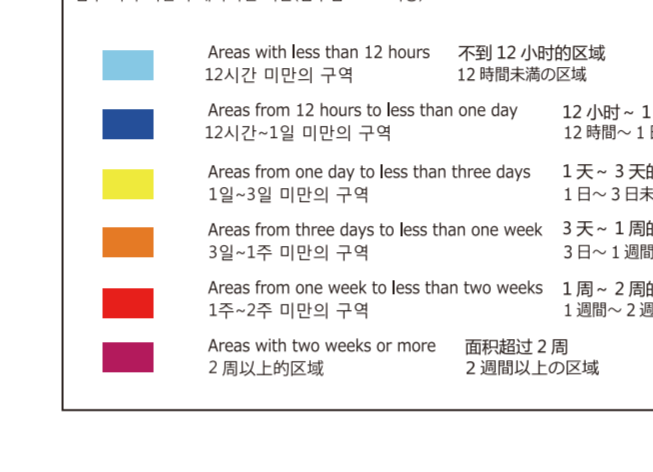
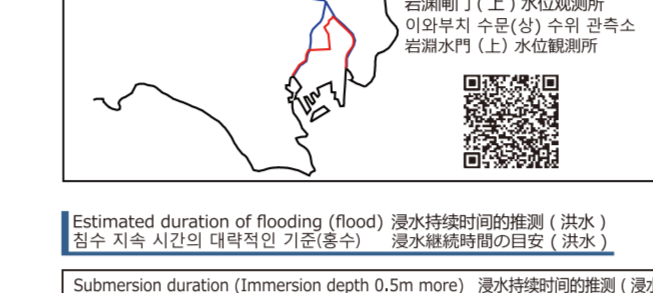
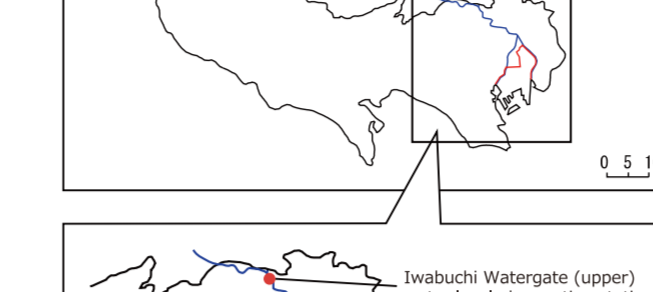
"In case there is not enough time to evacuate outside of the city, evacuation can be made to the evacuation sites when there is flooding.
 However, there is the risk of isolation with food and essentials stopping."
 "In case there is not enough time to evacuate outside of the city, evacuation can be made to municipal housing, operated housing (shared spaces) or elementary and junior high schools that have not been designated as evacuation sites.
 However, there is the risk of isolation with food and essentials stopping."
 "Elementary and junior high schools that have not been designated as evacuation sites."
 *Elementary and junior high schools where all floors would end up being flooded are not included on the map or the list.

No.	Facility	施設名	No.	Facility	施設名	No.	Facility	施設名	No.	Facility	施設名
1	Ryogoku Elem.Sch.	両国小学校	11	Honjo J.H.Sch.	本所中学校	21	Tachibana J.H.Sch.	立花橋南中学校	31	Kyuu-Sumida Elem.Sch.	旧両国小学校
2	Midori Elem.Sch.	緑小学校	12	Yokokawa Elem.Sch.	横川小学校	22	Terajima J.H.Sch.	寺島中学校	32	Sumida Elem.Sch.	隅田小学校
3	Chuya Elem.Sch.	中和小学校	13	Sotode Elem.Sch.	外手小学校	23	Daisan-azuma Elem.Sch.	第三百蔵小学校			
4	Kikkawa Elem.Sch.	菊川小学校	14	Ryogoku J.H.Sch.	両国中学校	24	Dayon-azuma Elem.Sch.	第四百蔵小学校			
5	Kinshi Elem.Sch.	錦糸小学校	15	Putaba Elem.Sch.	二葉小学校	25	Nakagawa Elem.Sch.	中川小学校			
6	Yangishima Elem.Sch.	楊島小学校	16	Kinshi J.H.Sch.	錦糸中学校	26	Hikifune Elem.Sch.	曳舟小学校			
7	Narihira Elem.Sch.	薬平小学校	17	Tatekawa J.H.Sch.	鯉川中学校	27	Bunka J.H.Sch.	文花中学校			
8	Sumida J.H.Sch.	墨田中学校	18	Sakuratsutsumi J.H.Sch.	桜塚中学校	28	Yahiyo Area Plaza	八広地域プラザ			
9	Koume Elem.Sch.	小梅小学校	19			29	Yahiyo Elem.Sch.	八広小学校			
10			20			30					
			21			31					
			22			32					
			23			33					
			24								
			25								
			26								
			27								
			28								
			29								
			30								
			31								
			32								
			33								

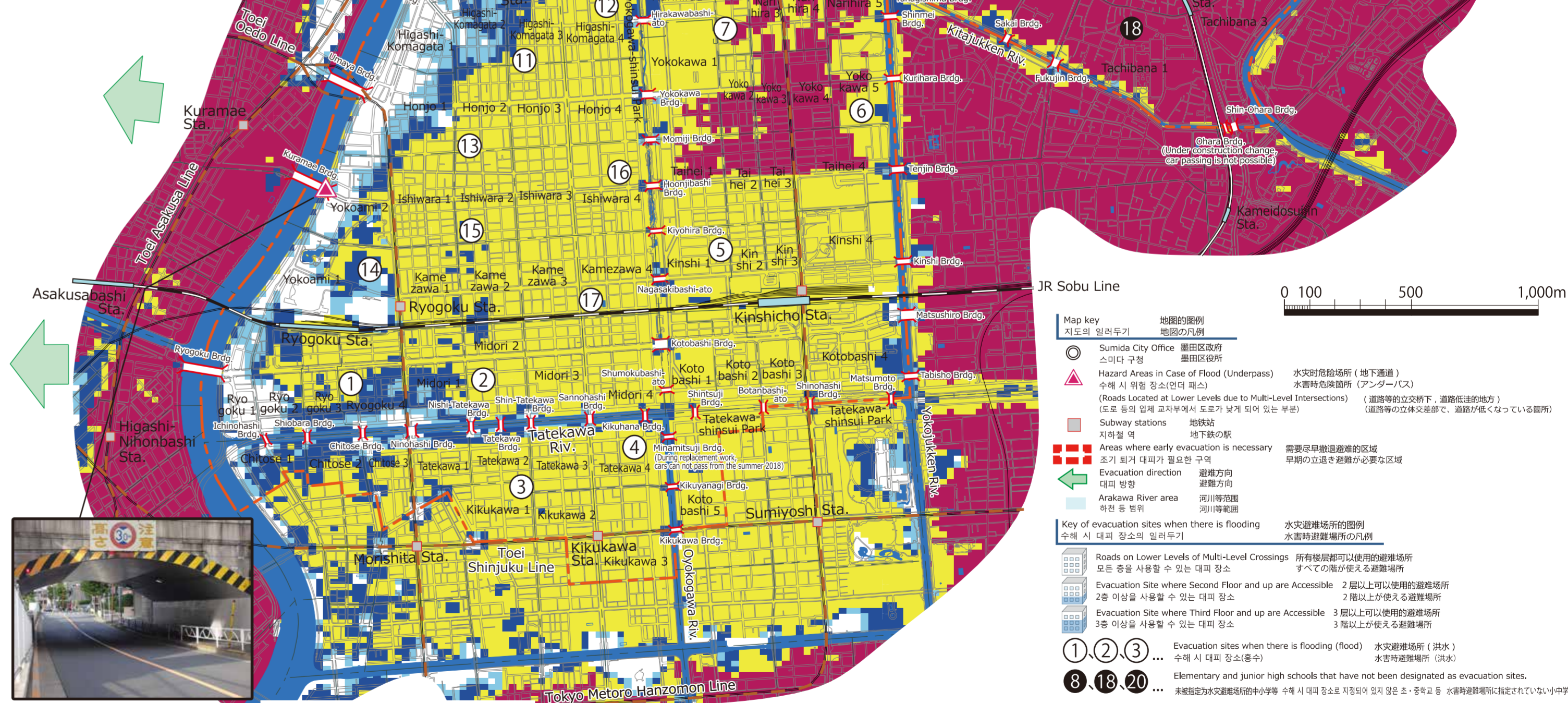
Sumida City Flood Hazard Map 墨田区水災危険地図
스미다구 수해 해지드 맵 墨田区水害ハザードマップ

-Map of the estimated flood areas in case the Arakawa River overflows (duration of flooding) - 荒川泛濫時の洪水想定区域(浸水継続時間)
 -아라카와가 범람한 경우의 침수 예상 구역(침수 지속 시간) - 荒川이 넘었을 때의 침수 예상 구역(침수 지속 시간)

Name : Arakawa River Estimated Flood Area Map
 Prepared by the Arakawa-Karyu River Office in the Kanto Regional Development Bureau of the Ministry of Land, Infrastructure, Transport and Tourism (MLIT)
 Created on: May 30, 2016
 Assumed rainfall: Total precipitation of 632mm within 72 hours in the Arakawa River basin (Maximum estimated rainfall as prescribed by the Flood Prevention Law)



In principle, evacuate outside of the city to where flooding is not predicted to happen
 原则上、洪水が予測されない地域に避難する
 原则上、洪水が予測されない地域に避難する
 원칙적으로 구외의 침수 예상 구역 밖으로 대피한다
 原則、区外の洪水想定区域外に避難する



"In case there is not enough time to evacuate outside of the city, evacuation can be made to the evacuation sites when there is flooding.
 However, there is the risk of isolation with food and essentials stopping."
 "In case there is not enough time to evacuate outside of the city, evacuation can be made to municipal housing, operated housing (shared spaces) or elementary and junior high schools that have not been designated as evacuation sites.
 However, there is the risk of isolation with food and essentials stopping."
 "Elementary and junior high schools that have not been designated as evacuation sites."
 *Elementary and junior high schools where all floors would end up being flooded are not included on the map or the list.

No.	Facility	施設名	No.	Facility	施設名	No.	Facility	施設名	No.	Facility	施設名
1	Ryogoku Elem.Sch.	両国小学校	11	Honjo J.H.Sch.	本所中学校	21	Tachibana J.H.Sch.	立花橋南中学校	31	Kyuu-Sumida Elem.Sch.	旧両国小学校
2	Midori Elem.Sch.	緑小学校	12	Yokokawa Elem.Sch.	横川小学校	22	Terajima J.H.Sch.	寺島中学校	32	Sumida Elem.Sch.	隅田小学校
3	Chuya Elem.Sch.	中和小学校	13	Sotode Elem.Sch.	外手小学校	23	Daisan-azuma Elem.Sch.	第三百蔵小学校			
4	Kikkawa Elem.Sch.	菊川小学校	14	Ryogoku J.H.Sch.	両国中学校	24	Dayon-azuma Elem.Sch.	第四百蔵小学校			
5	Kinshi Elem.Sch.	錦糸小学校	15	Putaba Elem.Sch.	二葉小学校	25	Nakagawa Elem.Sch.	中川小学校			
6	Yangishima Elem.Sch.	楊島小学校	16	Kinshi J.H.Sch.	錦糸中学校	26	Hikifune Elem.Sch.	曳舟小学校			
7	Narihira Elem.Sch.	薬平小学校	17	Tatekawa J.H.Sch.	鯉川中学校	27	Bunka J.H.Sch.	文花中学校			
8	Sumida J.H.Sch.	墨田中学校	18	Sakuratsutsumi J.H.Sch.	桜塚中学校	28	Yahiyo Area Plaza	八広地域プラザ			
9	Koume Elem.Sch.	小梅小学校	19			29	Yahiyo Elem.Sch.	八広小学校			
			20			30					
			21			31					
			22			32					
			23			33					
			24								
			25								
			26								
			27								
			28								
			29								
			30								
			31								
			32								
			33								